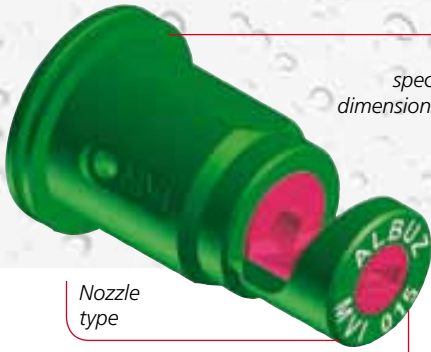


# MVI ALBUZ®

## Drift resistant air injected ceramic inserted deflector flood nozzle



ALBUZ®  
specific body  
dimensions 11 mm

Nozzle  
type

ISO  
color  
code

### APPLICATIONS

- ▶ All types of treatment (systemic and contact products) including liquid fertilizers.

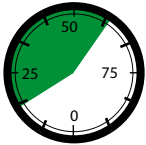
### MAIN CHARACTERISTICS

- ▶ Pink ALBUZ® ceramic orifice (excellent precision and high wear resistance).
- ▶ Flat fan pattern angle 130° to 160°.
- ▶ Big droplets with uniform distribution.
- ▶ Designed for all types of nozzles-holders, using the same cap as ALBUZ® APM nozzles.
- ▶ Full range with 10 models on ISO flow-rates.

### SPECIFIC CHARACTERISTICS

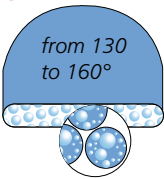
- ▶ Air-induction spray nozzle (venturi system): sprays large drops filled with air bubbles, which do not drift and produce fine droplets on contact with the plant.
- ▶ Almost totally eliminate drift, while increasing the number of impacts (excellent coverage of the treated zone).
- ▶ Anti-blocking design and double air-intake orifice.
- ▶ Easy dismantling for a good cleaning.
- ▶ **Recommended pressure: from 20 psi.**

### PRESSURE RANGE



from 20  
to 60 psi

### SPRAY ANGLE



from 130  
to 160°

### ANGLE BOARD

Psi	20	30	40
GREEN 015	130°	135°	140°
YELLOW 02	130°	140°	145°
LILAC 025	135°	145°	150°
BLUE 03	135°	140°	150°
RED 04	140°	150°	155°
BROWN 05	140°	150°	155°
GREY 06	140°	150°	155°
WHITE 08	145°	150°	155°
PALE BLUE 10	145°	155°	160°
PALE GREEN 15	150°	155°	160°

### Nozzle color selection - recommended pressure (psi) nozzle spacing 40 inches

Mph gal/acre	3			4			5			6			7,5						
4															24				
6								27			40	22			55	30			
8				31				50	27			40	25			55	35	24	
10	27			50	27			44	27			40	27	21		55	38		
14	55	30			55	35	24	21		55	38	30		55	42	26			
18		51	32	22	22		59	40	35	22			51	32			44	30	
22			49	34	34	21		61	53	34	23			49	34			46	25
25	24			44	44	27				44	30			44	24	21		60	33
30	35	22				40	27	21			44	24			35	30			48
35	48	30	21			55	38	35	21		60	33	30		48	42			67
45		51	35					44	35			56	51	22				30	
50			44		27				44					27				38	
55			53	29	34				53	23				34				46	
60	22			35	40					27				40				55	
65	26			41	47					32				47					
70	30			48		24				38				55					
80	40					31				50									
85	46	20				36				57									
95		25				45													
105		30																	
120		40																	
130		47																	

### Flow rate chart (Gpm)

Bar	GREEN 015	YELLOW 02	LILAC 025	BLUE 03	RED 04	BROWN 05	GREY 06	WHITE 08	PALE BLUE 10	PALE GREEN 15
20	0,108	0,143	0,179	0,215	0,287	0,358	0,430	0,574	0,717	1,075
30	0,131	0,174	0,218	0,261	0,348	0,436	0,436	0,697	0,871	1,307
35	0,141	0,188	0,234	0,281	0,375	0,469	0,469	0,750	0,938	1,407
40	0,150	0,200	0,250	0,300	0,400	0,500	0,600	0,800	1,000	1,500
50	0,167	0,223	0,278	0,334	0,445	0,557	0,668	0,890	1,113	1,670
60	0,182	0,243	0,304	0,364	0,486	0,607	0,729	1,215	1,215	1,822